

---

**FORSKRIFT OM**

**SIKKERHET VED ARBEID I OG**

**DRIFT AV ELEKTRISKE ANLEGG**

---

FSE 2006







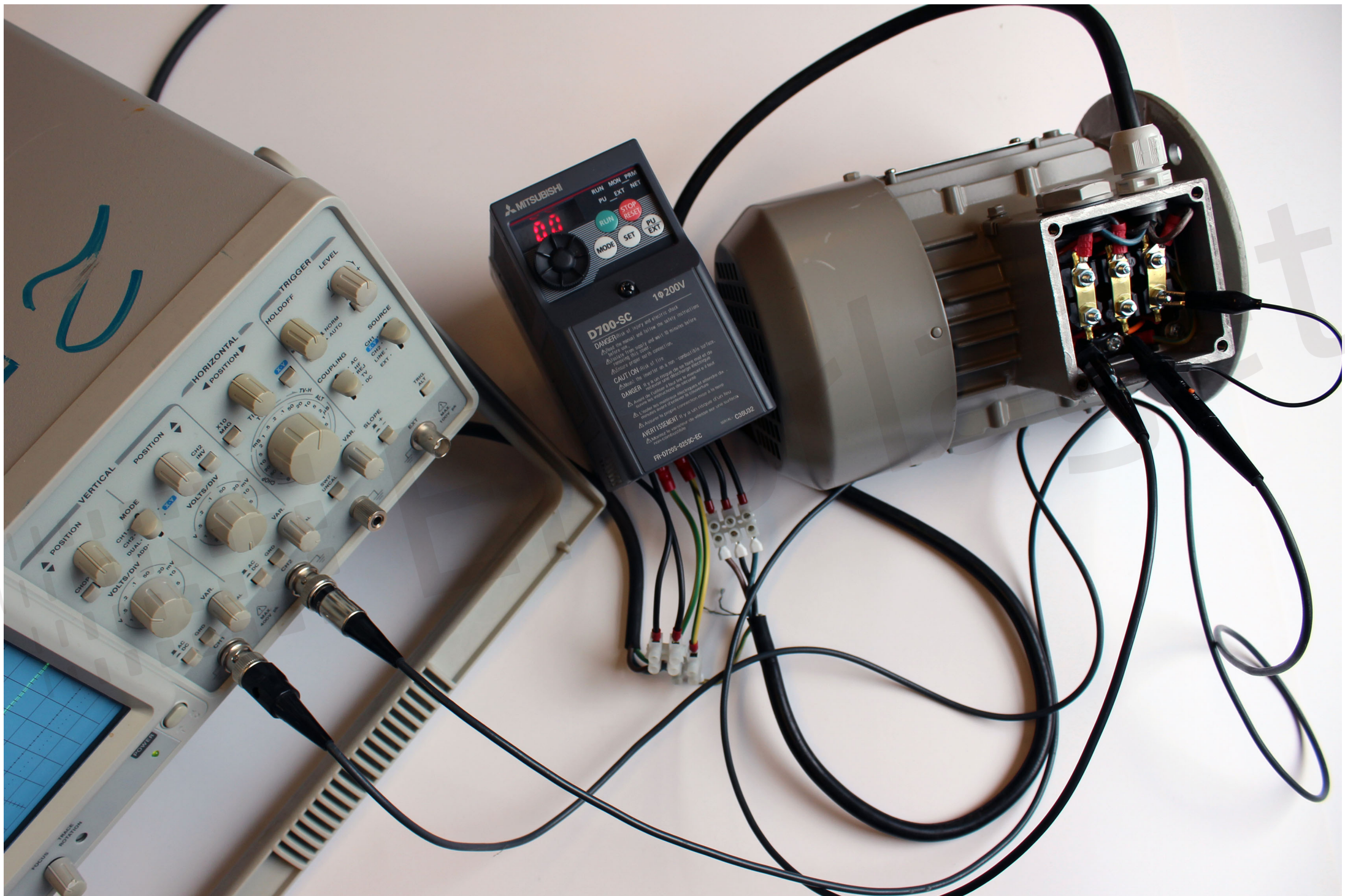
037 30  
230 V  
16 A  
legrand

14  
16

forlaget







MITSUBISHI  
RUN MON PRM  
PU EXT NET  
STOP  
RESET  
MODE SET  
PU EXT

1φ200V

**D700-SC**

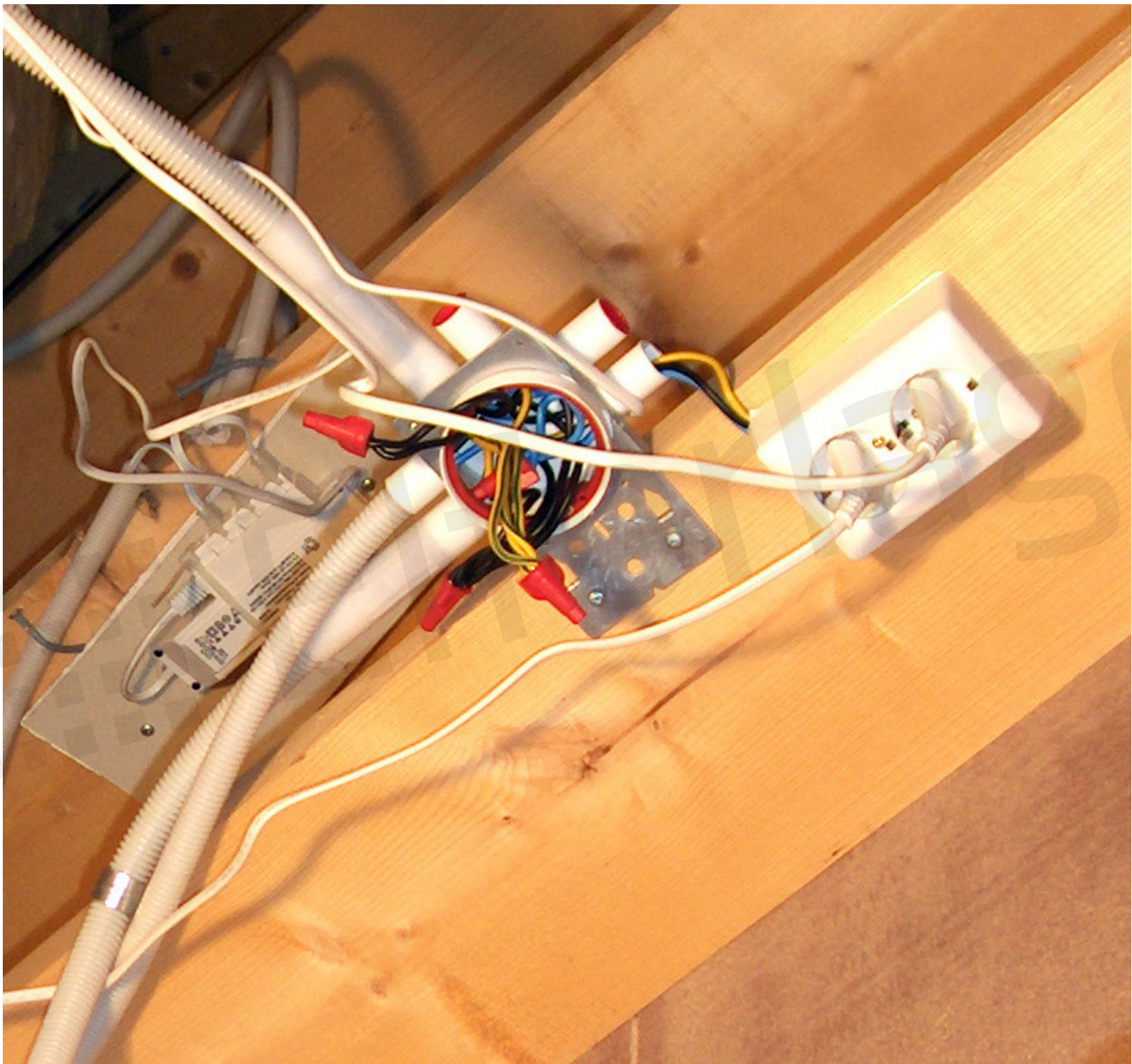
**DANGER** Risk of injury and electric shock.  
Always disconnect the power before the safety instructions.  
Always use proper safety procedures.  
Always use proper safety procedures.  
Always use proper safety procedures.

**CAUTION** Risk of fire.  
Always use proper safety procedures.  
Always use proper safety procedures.  
Always use proper safety procedures.

**DANGER** Risk of injury and electric shock.  
Always disconnect the power before the safety instructions.  
Always use proper safety procedures.  
Always use proper safety procedures.  
Always use proper safety procedures.

**AVVERTIMENTI** Rischio di lesioni e scossa elettrica.  
Sempre scollegare il cavo di alimentazione prima di intervenire.  
Sempre utilizzare le procedure di sicurezza.  
Sempre utilizzare le procedure di sicurezza.

PR-D700S-D253C-EC





**UTKOBLET**

**ARBEID  
PÅGÅR**

**Må ikke innkobles**







1000 V

EN/IEC

Maget



CENECH CV2080702  
U:400-  
Ie:200A

CENECH CV2080702  
U:400-  
Ie:200A

CENECH CV2080702  
U:400-  
Ie:200A

CENECH CV2080702  
U:400-  
Ie:200A

CENECH CV2080702  
U:400-  
Ie:200A

CENECH CV2080702  
U:400-  
Ie:200A

1/L1 3/L2 5/L3 7/L4

**CHNT**

NC2-400/4

IECEN 60847-4-1

CE

U <sub>e</sub>	230	400	V
I <sub>e</sub>	400	400	A
P <sub>e</sub>	110	200	kW

U<sub>i</sub>=1000V I<sub>e</sub>(AC-1)<sub>cb</sub>=450A

U <sub>e</sub>	230	400	V
I <sub>e</sub>	400	400	A
P <sub>e</sub>	110	200	kW

Short circuit  
19kA rms 50kA 600V Max.  
Max. fuse 60TA/CB 60TA  
60/75°C Cu-wire only  
Torque power terminal  
screws to 89 lb in

ZHEJIANG CHINT ELECTRICS CO.,LTD

2/T1 4/T2 6/T3 8/T4

CHNT

NO1 9/11 2/T1 4/T2 6/T3 8/T4

CHNT

2700/200/3  
30A  
IEC 60547-2